

## Find a Post Office Service Samples for .Net

This folder contains sample code for accessing Find a Post Office services via the .Net Framework. Samples are provided for these operations:

- GetNearestPostOffice
- GetPostOfficeDetail

### About These Samples

- These samples are meant to accompany the [Developer Program Getting Started Guide](#). They will help you validate that your Developer Program account is set up correctly, and will help you create your first Find a Post Office request.

### Conventions

- **<install\_directory>** - This is the file folder where you have extracted these code samples into. Examples may include: CPCWS\_Java\_Samples; CPCWS\_DotNet\_Samples, or CPCWS\_Tracking\_PHP\_Samples among others.

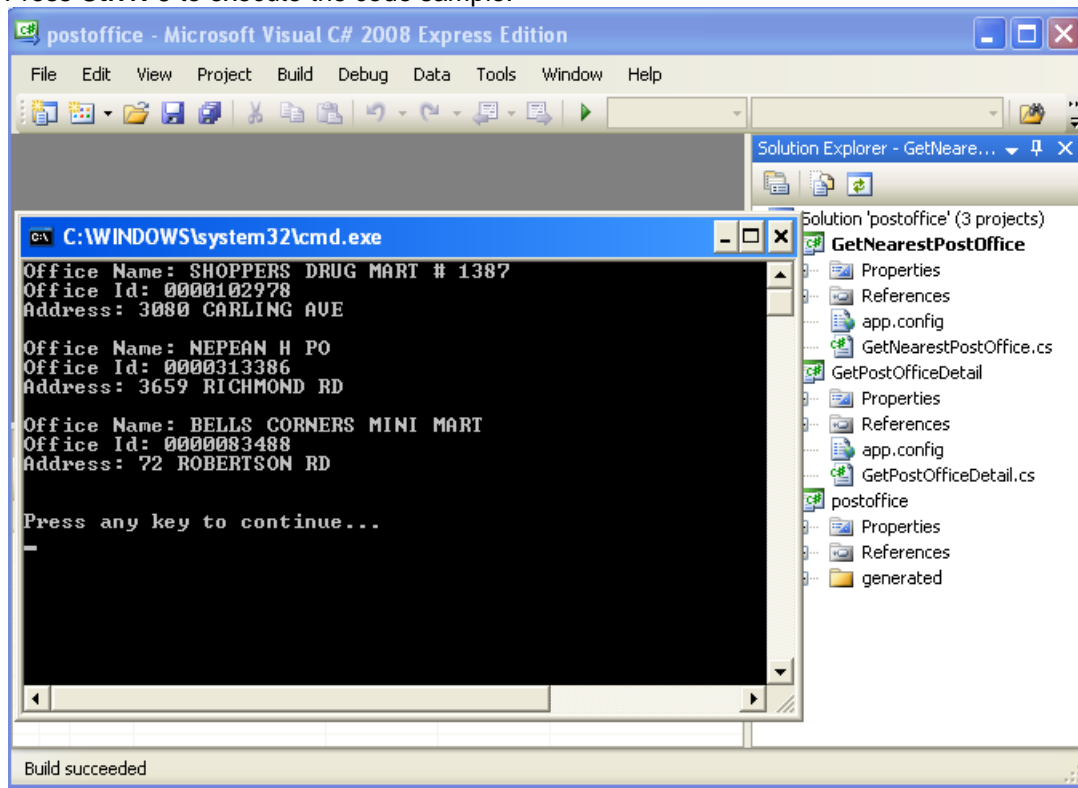
### Prerequisites

- You must have a valid Developer Program developer account.
- You must be signed up to use Developer Program.
- Requires the Microsoft Visual C# 2008 or newer.

### Running the Samples

- 1) Edit **<install\_directory>\SOAP\postoffice\user.xml** in the folder of extracted package.
  - a) Update this file with your Developer Program username, password and customer number.
- 2) Open .Net solution from extracted samples package using Visual C#.
  - a) From the main menu bar, select **File → Open Project....** The Open Project dialog box opens.
  - b) Browse directory of the extracted samples and select the **<install\_directory>\SOAP\postoffice\postoffice.sln** file.
- 3) Execute the code sample.
  - a) Select **GetNearestPostOffice** project.

b) Press **Ctrl+F5** to execute the code sample.



4) Experiment with samples.